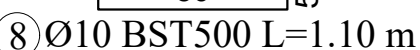
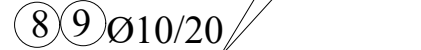


Scara 1:20



Scara 1:20



Scara 1:20



Scara 1:20



Scara 1:20



scara 1:20



Scara 1:20



Scara 1:20



Scara 1:20



Scara 1:20



Extras de armatura

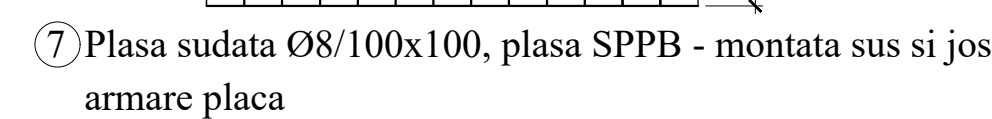
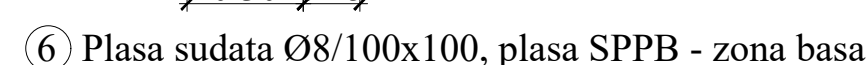
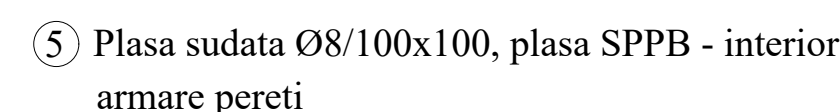
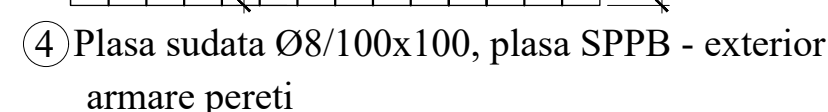
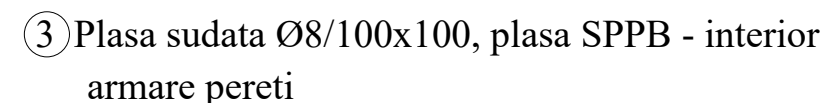
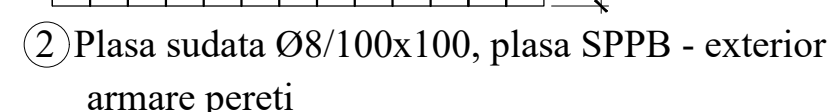
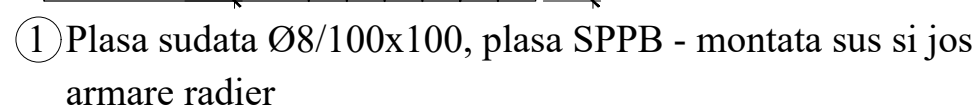
[illegible]

BETON SIMPLU: C8/10 -X0 - Cl 0.2 - Dmax22
BETON ARMAT : C25/30 -XC2- Dmax22, CEM II/A-LL 42.5 F
OTEL BETON: BST 500C
PLASA SPPB- SR 438-3:2012
ACOPERIRE CU BETON, a=5cm

1. Executantul are obligatia sa verifice toate dimensiunile pe santier, inainte de procurarea materialelor si inceperea executiei, pentru toate categoriile de lucrari.
2. Se efectueaza masuratori pe cofraj inainte de debitoria si fasonarea barelor si a plaselor de armatura.
3. La laselae de armatura verticale se face debitoria dupa stabilirea exacta a cotei de adancime a caminelor.
4. Capacul de acces in camin se va alege in functie de pozitia caminului fata de drum:
 - camin carosabil va fi echipat cu capac carosabil clasa D400;
 - camin necarosabil cu capac necarosabil clasa C250;
5. Toate capacele de forma rotunda sau patratu vor fi din fonta.

Adancimea caminului se va stabili cu exactitate in timpul lucrarilor de executie, functie de adancimea de pozare a conductei existente.

⑦ Plasa sudata Ø8/100x100, plasa SPPB - montata sus si jos
armare placa

[illegible]